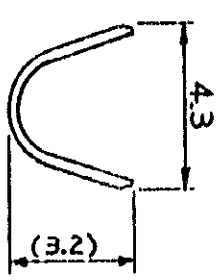
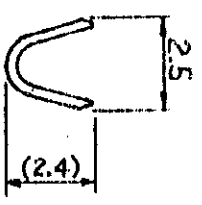
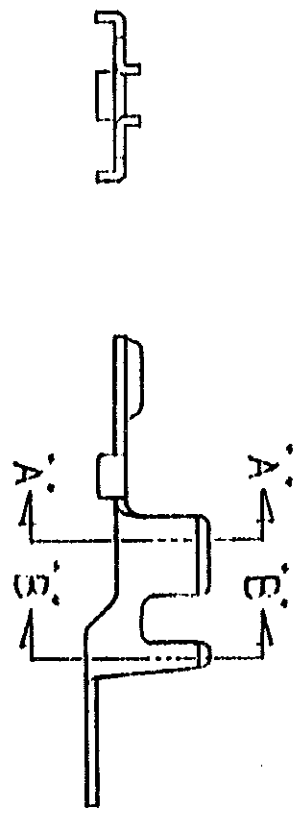
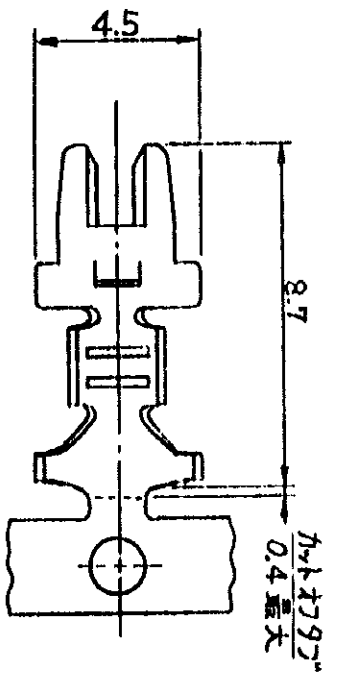


製品仕様書 PRODUCT SPEC. 108-5171
 取付適用仕様書 APPLICATION SPEC. 114-5074
 取扱説明書 INSTRUCTION SHEET IS-202J



171603-2 錫めっき済りん青銅 171602-2

材質: MATERIAL 連鎖状型番: 別

表参照

東京電機工業株式会社
 TOKYO DENSO KOGYO CO., LTD.
 (CUSTOMER COPY)
 (REFERENCE ONLY)

| | |
|----|-------------------------------|
| 0 | 訂正 J92-6199(4) 16 made 1/5/83 |
| 0 | 作成 J92-6696.H Yamada 8/22/82 |
| 0 | 変更 REVISION RECORD |
| DR | DATE |

| | | | | |
|--------------|------|-----------------|-----------------|-----------------|
| 03~089 | 22~3 | 5-1 | J | C-171602 |
| SCALE | UNIT | NO. OF CONTACTS | NO. OF CONTACTS | NO. OF CONTACTS |
| 5-1 | mm | 5-1 | J | C-171602 |
| REC. CONTACT | | | | |

5/75 ピッチ; リセ・コンタクト